

CHELAN COUNTY

MONTHLY FINANCIAL REPORT

OCTOBER 2012



HIGHLIGHTS:

General Fund summary, projected and actual:

	Projected Year-to-Date	Actual Year-to-Date
Revenue	26,216,450	28,906,290
Expenditures	25,622,179	25,409,448
Net Income (Deficit)	594,271	3,496,842
Beginning Fund Balance	1,600,000	2,231,455
Current Fund Balance	2,194,271	5,728,297
Ending Cash Balance		6,954,113

The above projected numbers do not include emergency appropriations or unbudgeted revenue. Expenditures, revenues, and fund balances in this report are compiled on the modified accrual basis.



Prepared by:
Brad Posenjak, CPA
 Chief Deputy Auditor
 (509) 667-6655
brad.posenjak@co.chelan.wa.us

Previous monthly financial reports are available at http://www.co.chelan.wa.us/ad/accounting/county_budget.htm

GENERAL FUND - BY CATEGORY

Through October 31, 2012

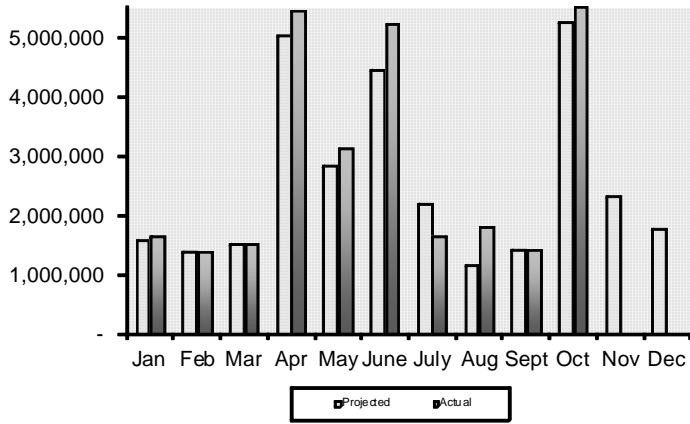
REVENUE	Month-To-Date			Year-To-Date		
	Projected	Actual	Variance	Projected	Actual	Variance
Property Tax	3,208,663	3,206,157	(2,506)	9,309,428	9,464,366	154,938
Sales Tax	453,529	519,763	66,235	3,998,144	4,274,957	276,813
Prop. Tax Penalty & Interest	59,092	65,451	6,359	616,427	1,024,444	408,016
Building and Planning Fees	90,547	144,204	53,657	801,461	976,901	175,441
PILT	0	0	0	2,175,200	2,313,538	138,338
PUD Priviledge Tax	0	0	0	975,000	1,368,421	393,421
Liquor X & P	13,788	0	(13,788)	124,838	152,371	27,533
Wenatchee Court	24,297	0	(24,297)	151,886	161,469	9,583
Law Enforcement Contracts	24,866	516,500	491,634	1,790,331	2,281,413	491,081
Recording Fees	11,839	14,546	2,707	115,282	128,822	13,539
Motor Vehicle Licensing	33,212	27,673	(5,539)	356,202	347,221	(8,981)
Probation Services	22,178	22,345	166	217,291	208,770	(8,521)
Interfund Payments	222,438	230,056	7,619	1,221,097	1,260,600	39,504
Court Fines	72,967	95,484	22,517	719,052	642,361	(76,691)
Treasury Interest	10,507	19,497	8,990	127,407	134,542	7,135
Grants\Entitlements	308,394	369,981	61,586	1,889,894	1,987,485	97,591
Other *	177,213	290,634	113,420	1,627,509	2,178,609	551,100
TOTAL	4,733,530	5,522,291	788,761	26,216,450	28,906,290	2,689,840

EXPENDITURES	Month-To-Date			Year-To-Date		
	Projected	Actual	Variance	Projected	Actual	Variance
10 - Salaries & Wages	1,227,703	1,155,621	(72,082)	12,004,674	11,804,677	(199,997)
20 - Personnel Benefits	468,522	457,302	(11,221)	4,705,807	4,551,450	(154,357)
30 - Supplies	48,615	46,191	(2,424)	444,536	494,388	49,852
40 - Other Services/Charges	485,108	440,770	(44,337)	4,066,027	4,094,526	28,499
50 - Intergovernmental Svcs	42,879	36,103	(6,776)	313,407	370,043	56,636
90 - Interfund Payments	443,061	355,183	(87,878)	4,087,727	4,094,364	6,637
00 - Reclassifications	0	0	0	0	0	0
TOTAL	2,715,889	2,491,171	(224,718)	25,622,179	25,409,448	(212,731)

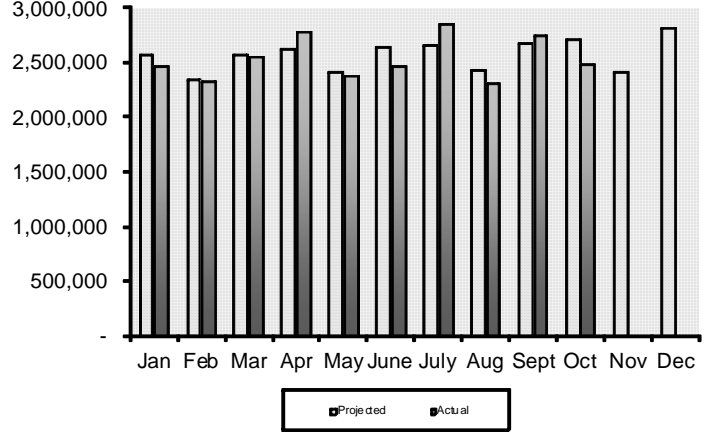
Projected columns are calculated by comparing actuals from the past five years on a monthly basis. The monthly averages are then applied to the 2012 budget.

* Other revenues include various small fees, grants, and state funds.

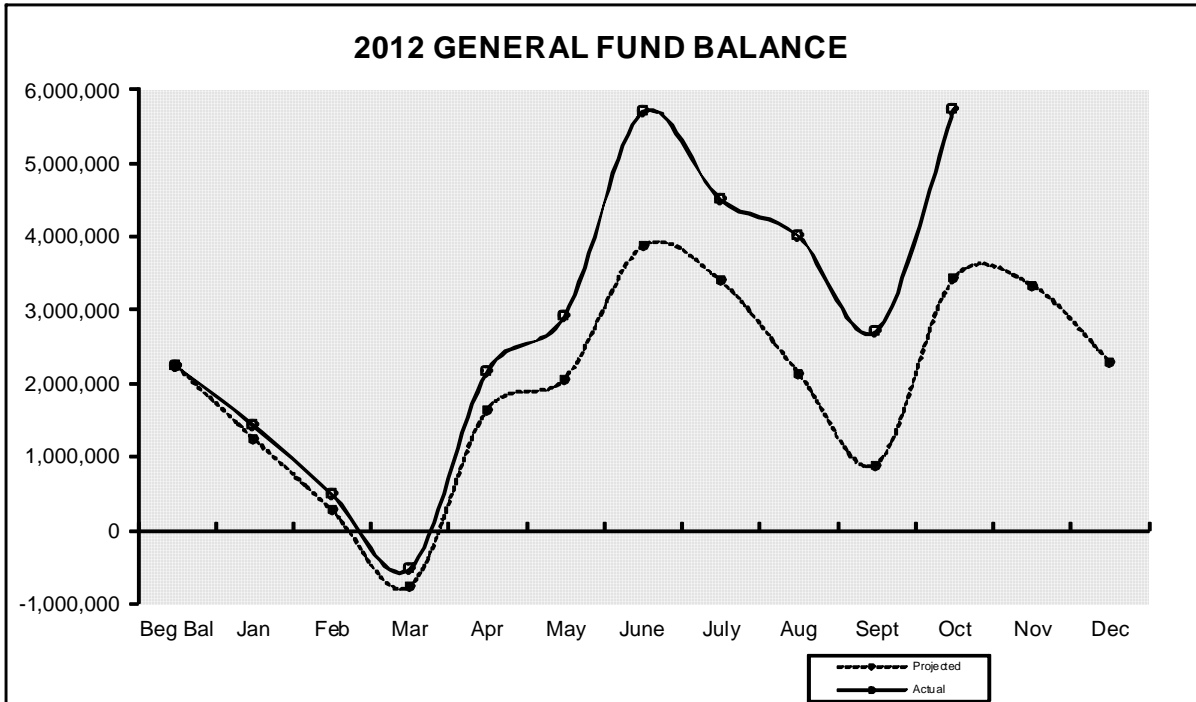
MONTHLY GENERAL FUND REVENUES



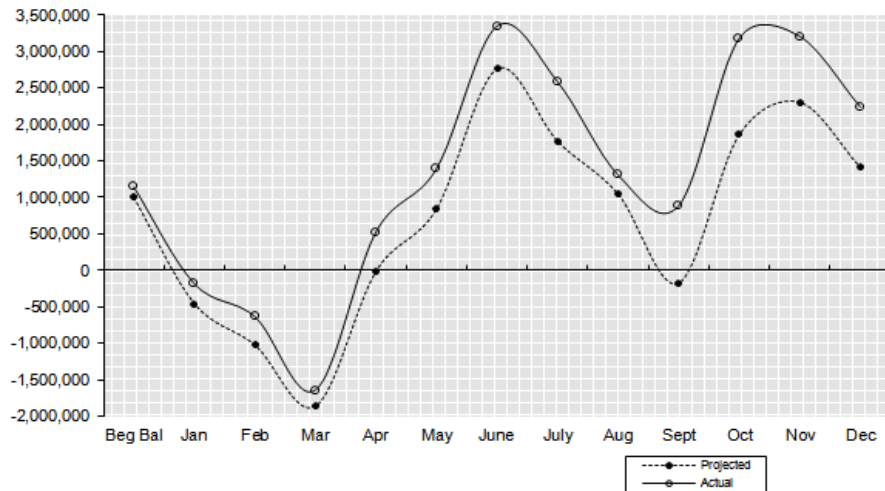
MONTHLY GENERAL FUND EXPENDITURES



2012 GENERAL FUND BALANCE



2011 GENERAL FUND BALANCE



REVENUE

Through October 31, 2012

GENERAL FUND

Dept # / Department	2012 Budget	2012 Actual	Balance	Percent Received
010 Reserve	0	423	(423)	100.0%
010 Assessor	40	71,798	(71,758)	179494.0%
015 Auditor *	883,967	782,758	101,209	88.6%
020 Community Development	1,011,307	1,038,089	(26,782)	102.6%
040 Clerk	786,515	723,569	62,947	92.0%
045 Commissioners	9,153,453	9,045,091	108,362	98.8%
050 Coroner	15,000	15,892	(892)	105.9%
052 Information Technology	107,444	101,207	6,237	94.2%
055 Facilities Maintenance	634,294	554,157	80,137	87.4%
065 District Court	1,319,653	1,009,776	309,877	76.5%
066 District Court Probation	306,529	242,433	64,096	79.1%
075 Extension Services	56,385	47,740	8,645	84.7%
085 Juvenile Services	653,997	528,629	125,368	80.8%
105 Non-Departmental	623,440	571,714	51,726	91.7%
139 Child Support Enforcement	402,638	270,690	131,948	67.2%
140 Prosecuting Attorney	561,841	437,999	123,842	78.0%
145 Sheriff *	2,770,926	2,558,798	212,128	92.3%
155 Superior Court System	89,951	93,497	(3,546)	103.9%
165 Treasurer	1,093,218	1,347,665	(254,447)	123.3%
170 Property Taxes	10,572,216	9,464,366	1,107,850	89.5%
TOTALS	31,042,814	28,906,290	2,136,524	93.1%

SPECIFIC FUNDS

Fund	2012 Budget	2012 Actual	Balance	Percent Received
110 County Roads	17,422,317	9,184,380	8,237,938	52.7%
119 Ohme Gardens	206,690	183,773	22,917	88.9%
125 Horticulture	121,758	111,694	10,064	91.7%
128 Noxious Weed	299,951	211,932	88,019	70.7%
180 Natural Resources	3,977,152	950,257	3,026,895	23.9%
405 Wenatchee River Park	242,250	245,105	(2,855)	101.2%
410 Expo Center	146,162	153,242	(7,080)	104.8%
411 Fair	173,500	191,041	(17,541)	110.1%
450 Regional Justice Center	8,179,838	6,680,041	1,499,797	81.7%
510 ER&R	2,855,949	1,633,459	1,222,490	57.2%
530 Motor Pool	946,724	999,205	(52,481)	105.5%

* Includes additional revenue budget than what was originally budgeted

EXPENDITURES

Through October 31, 2012

GENERAL FUND

Dept # / Department	2012 Budget	Budget Adjs	2012 Actual	Balance	Percent Expended
010 Assessor	1,107,849	0	870,790	237,059	78.6%
015 Auditor	1,058,166	30,000	888,136	200,030	81.6%
016 Board of Equalization	7,045	1,420	4,534	3,931	53.6%
020 Community Development	1,476,894	0	1,072,063	404,831	72.6%
030 Civil Service Comm	11,097	0	4,891	6,206	44.1%
040 Clerk	1,014,020	0	826,088	187,932	81.5%
045 Commissioners	657,054	10,470	568,998	98,526	85.2%
050 Coroner	168,850	0	127,826	41,024	75.7%
052 Information Technology	600,422	0	481,765	118,657	80.2%
055 Facilities Maintenance	1,466,271	0	1,089,128	377,143	74.3%
065 District Court	1,131,163	7,708	893,240	245,631	78.4%
066 District Court Probation	405,227	0	332,063	73,164	81.9%
075 Extension Services	275,735	0	216,756	58,979	78.6%
085 Juvenile Services	2,598,999	0	2,113,013	485,986	81.3%
105 Non-Departmental	7,215,183	225,000	6,076,343	1,363,840	81.7%
139 Child Support Enforcement	354,044	0	250,465	103,579	70.7%
140 Prosecuting Attorney	1,792,224	0	1,429,761	362,463	79.8%
145 Sheriff	7,982,690	381,711	6,884,739	1,479,662	82.3%
155 Superior Court System	963,606	11,265	815,503	159,368	83.7%
165 Treasurer	577,206	0	463,344	113,862	80.3%
TOTALS	30,863,745	667,574	25,409,448	6,121,871	80.6%

SPECIFIC FUNDS

Fund	2012 Budget	Budget Adjs	2012 Actual	Balance	Percent Expended
110 County Roads	17,803,477	0	10,842,611	6,960,866	60.9%
119 Ohme Gardens	227,142	0	166,953	60,189	73.5%
125 Horticulture	134,149	0	83,777	50,372	62.5%
128 Noxious Weed	311,633	0	224,821	86,812	72.1%
180 Natural Resources	3,999,676	0	996,930	3,002,746	24.9%
405 Wenatchee River Park	266,345	0	239,256	27,090	89.8%
410 Expo Center	136,308	0	108,713	27,595	79.8%
411 Fair	172,166	0	119,875	52,291	69.6%
450 Regional Justice Center	8,430,974	0	6,818,592	1,612,382	80.9%
510 ER&R	2,767,380	0	2,459,167	308,213	88.9%
530 Motor Pool	948,329	0	866,183	82,146	91.3%

CASH & INVESTMENTS

Fund	August 31, 2012 Cash & Investments	September 30, 2012 Cash & Investments	October 31, 2012 Cash & Investments
010 General	5,100,469	4,150,328	6,954,113
110 County Roads	3,842,794	2,425,467	2,359,368
119 Ohme Gardens	122,357	121,027	113,634
125 Horticulture Pest & Disease	41,295	37,105	40,634
128 Noxious Weed	3,959	3,196	59,378
140 Cashmere-Dryden Airport	31,257	30,306	27,521
180 Natural Resources	15,461	89,693	160,148
190 Criminal Justice Tax	1,202,502	1,266,300	1,330,504
301 REET 1	1,289,161	1,224,792	1,242,113
405 Wenatchee River Park	145,600	149,698	85,477
410 Expo Center	25,270	36,505	72,850
411 Fair	12,468	114,107	95,062
450 Regional Justice Center	893,634	1,052,092	695,047
510 ER&R	1,625,916	1,483,092	1,392,206
526 Health Insurance	228,582	224,516	220,474
530 Motor Pool	38,740	7,793	135,775
535 Unemployment Comp	113,671	127,185	125,341
540 Tort Claims & Insurance	500,010	6,208	184,222

Accounts Receivable Outstanding Older than 30 days

Auditor			Natural Resources		
010015-01599	6/1/2012 DSHS - MA	248.00	180001-00708	12/31/2011 WA St Dept of Ecology	9,191.01
010015-01627	9/4/2012 Central Washington Title	3,701.00	180001-00713	12/31/2011 National Fish & Wildlife Found	2,022.12
Commissioners			180001-00714	12/31/2011 National Fish & Wildlife Found	18,641.10
010045-00084	6/29/2012 DSHS	214.13	180001-00720	12/31/2011 Emergency Management WA	1,136.31
010045-00085	8/9/2012 DCTED - OCD - Housing Div	72,455.00	180001-00731	5/1/2012 WA St Dept of Ecology	5.00
Extension			180001-00745	5/22/2012 National Fish & Wildlife Found	1,391.68
010075-00186	8/15/2012 Washington State University	14,947.40	180001-00748	7/9/2012 Upper Col Salmon Rec Board	123,293.71
010075-00187	8/15/2012 Washington State University	29,895.46	180001-00753	7/19/2012 WA St Dept of Ecology	6,626.30
010075-00188	9/11/2012 Washington State University	19,427.53	180001-00755	7/19/2012 WA St Dept of Ecology	4,951.88
Juvenile			180001-00762	9/17/2012 Recreation/Conservation	1,487.50
010085-01160	7/10/2012 Juvenile Rehab Admin Reg 1	0.03	180001-00763	9/18/2012 Recreation/Conservation	12,772.61
Sheriff			CASA		
010145-01024	8/8/2012 City of Leavenworth	0.02	191001-00111	07/03/2012 Regina McDougall, AOC	42.51
010145-01027	8/20/2012 Grant County DEM	680.58	Substance Abuse		
010145-01035	9/26/2012 Icicle Enterprises	423.49	193001-00172	06/27/2012 DSHS	709.05
010145-01036	9/26/2012 WASPC	1,000.00	193001-00173	07/18/2012 DSHS	74,633.00
010145-01037	9/26/2012 WA St Traffic Safety Comm	1,000.00	193001-00174	07/18/2012 DSHS	0.39
010145-01039	9/26/2012 WASPC	22,789.62	193001-00180	08/23/2012 DSHS	7,719.87
010145-01040	9/26/2012 Grant County DEM	194.31	Regional Justice Center		
Superior Court			450001-01865	05/24/2011 DHS/ICE	147.00
010155-00027	6/12/2012 AOC	5,646.87	450001-01876	06/06/2011 DHS/ICE	367.50
Public Works			450001-01909	07/05/2011 DHS/ICE	955.50
110001-00523	6/25/2012 Selland Construction, Inc	75.00	450001-01941	08/02/2011 DHS/ICE	294.00
401001-01965	5/25/2012 WA St Dept of Ecology	20,071.53	450001-01944	08/02/2011 Score	2,730.00
401001-02025	8/3/2012 Mason Roofing & Construction	620.00	450001-01973	09/05/2011 DHS/ICE	441.00
401001-02050	9/6/2012 Mason Roofing & Construction	842.00	450001-02014	10/04/2011 DHS/ICE	220.50
401001-02051	9/6/2012 Pinckney Construction	14.00	450001-02052	11/02/2011 DHS/ICE	1,617.00
510001-00813	5/25/2012 Chelan County Coroner	157.57	450001-02083	12/05/2011 DHS/ICE	588.00
530001-00114	8/20/2012 Chel Co Natural Resources	513.60	450001-02114	12/31/2011 DHS/ICE	661.50
530001-00124	9/25/2012 Chel Co Noxious Weed	153.31	450001-02142	02/02/2012 DHS/ICE	882.00
530001-00133	9/25/2012 Chel Co Natural Resources	896.80	450001-02197	04/09/2012 DHS/ICE	441.00
530001-00143	9/25/2012 Chel Co Noxious Weed	1,414.00	450001-02232	05/07/2012 DHS/ICE	441.00
Parent Education			450001-02264	06/06/2012 DHS/ICE	441.00
136001-00022	3/6/2012 Council for Children/Families	34.97	450001-02330	08/09/2012 YWCA	191.00
Community Services & Housing			450001-02336	09/05/2012 Department of Corrections	32,199.00
163001-00014	10/7/2010 DCTED - OCD - Housing Div	22,727.95	450001-02348	09/05/2012 City of Wenatchee	293.50
			450001-02350	09/05/2012 YWCA	221.00
			450001-02355	09/11/2012 Department of Corrections	3,702.16
			450001-02357	09/11/2012 City of North Bend	95.20
			Health Insurance		
			526001-00003	12/31/2010 Daryl Mathena	241.03
			526001-00004	3/8/2011 Daryl Mathena	458.78

If any of these outstanding receivables have been paid, will not be paid, or need adjustment,
please contact the Chelan County Auditor's Accounting Office.